

# Birmingham TreePeople

Planting, Protecting, & Promoting Trees & The Urban Forest

## Monthly Newsletter



Issue 07, 20/01/24

# Birmingham Roots



The Woodland Trust's Tree Equity Score has launched - read about how we helped!

Krish Kumar and Raghav Kumar, BTP volunteers involved with the iTree Eco Survey, photographed for Woodland Trust's Equity campaign last year.



# Birmingham Roots



## Contents

### 2 Features: A Word from The Chair | Upcoming Events

Our Chair's featured words on the new year, and our upcoming events, including joint, in-person, free training sessions in February and March.

### 3 Bromford: Tree Planting Update

Tonia visited the Bromford tree planting location, the final planting day of 2023, and took some wonderful close-up images of the magnificently decorated trees. Let's take a moment to celebrate last year.

### 4 Tree Equity

Last year we helped Woodland Trust with their Tree Equity campaign that has just been launched, as we've been working on it too; so, what exactly does this mean, and why is it important to us?

### 5 Tree Tales

Introducing our story-telling initiative, Tree Tales, where we are calling for your submissions that tell a story about you and nature.

Birmingham Roots is BTP's monthly newsletter for the mailing list. It is available to download online, in our [Newsletter Archive](#).  
[Website](#) | [Facebook](#) | [Instagram](#) | [LinkedIn](#) | [Twitter](#)





# Features

## A Word from The Chair



**Tonia Clark**

Happy New Year to all of our TreePeople! It's a bit cold at the moment, and although we may not like it, it's important for our trees. Pests and diseases are killed off in freezing temperatures, and when we have warm, wet winters, there is no natural check on the growth of the pest populations.

Cold is also crucial for seed germination. Some tree seeds need a prolonged period of cold before they will germinate in spring. Over time, trees will adapt to warmer, wetter winters, but for now they need these cold snaps.

## Upcoming Events

### Free Monthly Training Sessions:

- **Saturday 20<sup>th</sup> January, Online, 10:00-12:00**

Mac will be leading an online session about how to employ tree contractors. These could be tree surgeons, arborists, or gardeners, so who is best to call, and what are your responsibilities as the tree owner? Link: <https://classroom.google.com/u/0/c/OTg4NDAwNDY1NFpg>

- **Saturday 17<sup>th</sup> February, In-Person, 10:00-12:00**

This will be a joint session with [Open Door](#), learning about orchards and the history of trees in Firs and Bromford, and Mac will be talking about orchard tree planting and maintenance. Location: Ambridge Community Centre, Bromford Drive, Bromford, Birmingham, B36 8QY.

- **Saturday 16<sup>th</sup> March, In-Person, 10:00-12:00**

This joint session will be on winter tree identification, following on from our successful conifer session before Christmas, alongside [Highbury Park Friends](#). Location: Highbury Park car park (starting point), Shutlock Lane.

- **Saturday 20<sup>th</sup> April, Online, 10:00-12:00**

A web session, topic tbc, link is the same as above.

### iTree Eco with the Mayor of Birmingham

We will be planting a special tree for the end of the [iTree Eco Survey 2023](#), with Mayor Andy Street, WMCA, [Treeconomics](#), [Barton Hyett](#), [Forest Research](#), and [Woodland Trust](#) on **Friday 26<sup>th</sup> January**.

### Using trees to bring people together

Join BTP and Eden Project Communities (EPC) on **Wednesday 31st January, 6:30-8:00pm**, for a group tree hug via Zoom! Share ideas and experiences with a support network of like-minded people interested in nature. Follow this link for details and registration: <https://events.more-human.co.uk/event/using-trees-to-bring-people-together-with-eden-project-communities-events>

### Tree Cities of the World Conference

The City of Birmingham will be hosting the next [Tree Cities](#) conference of 2024, alongside [Trees for Cities](#) (after our successful planting collaboration), and will be taking place on **Tuesday 11<sup>th</sup> & Wednesday 12<sup>th</sup> June**.

CLICK THE LINK

**HERE** 

TO CONTACT US

**Birmingham Roots** is BTP's monthly newsletter for the mailing list.

It is available to download online, in our [Newsletter Archive](#).

[Website](#) | [Facebook](#) | [Instagram](#) | [LinkedIn](#) | [Twitter](#)



# Bromford: Tree Planting Update



[Masterplan](#) (UFMP)), and helped arranged the Bromford planting, in conjunction with [Open Door](#) (whom we also have a training session with in February), with little time to spare. Despite this, the day was an overwhelming success, and if you haven't seen this planting day you can find the information [here](#).

We want to thank everyone who was involved, not only in the Bromford planting, but all the community planting days, that made the end of last year so special.

We have a few more planting days left, please contact [Katy](#) for details.



Tonia Clark, BTP Chair, visited the location of the Bromford trees from our final, jam-packed, community [planting](#) day of 2023.

The day was filled with fun and laughter, and the joy felt was translated to the trees, by decorating them with tinsel for Christmas, signing the stakes with the names of those who planted them, and flowers have been left for those they represent.

Katy Hawkins, BTP's Engagement Officer, worked tirelessly to plan most of the tree planting days (under the Urban Forest Accelerator (UFA) project and the [Urban Forest](#)

**Birmingham Roots** is BTP's monthly newsletter for the mailing list. It is available to download online, in our [Newsletter Archive](#).  
[Website](#) | [Facebook](#) | [Instagram](#) | [LinkedIn](#) | [Twitter](#)

# Tree Equity

Originally assisting [The Woodland Trust](#) as consultants during the preliminary phase, Birmingham TreePeople contributed towards the launch of WT's [Tree Equity Score](#), by demonstrating and explaining some of the work we have already been doing in the City of Birmingham, with the [Urban Forest Masterplan](#).

BTP's relationship with WT has developed further, as both charities are contributing towards the Urban Forest Accelerator, where our joint focus on tree equity is a prominent feature of the project. BTP have been planting in the wards we have due to those areas having low tree equity. So, what exactly is Tree Equity, and why does it matter to us?

Low tree equity means that an area is lacking in trees, and an area with high tree equity has most benefits of green spaces. That's why our priority wards targeted areas with lower canopy cover, to raise the tree equity. WT says on their new page: 'Tree equity is the idea that all communities have equitable access to the benefits of trees where they live. While some urban areas enjoy abundant greenery and tree cover, others lack these essential natural assets.'

**Krish and Raghav Kumar, BTP volunteers, professionally photographed by Phil Formby for WT's Tree Equity.**



**Krish Kumar and Raghav Kumar, pictured with Catherine Nuttgens (WT) after their interview, by Phil Formby.**

**Charlotte McDermott, BTP's Communications Officer, along with Krish and Raghav, took the lovely group from WT (Catherine, Amber, and Phil) to Nechells, one of our priority wards where we planted with the community last year, to capture many professional photos of good and bad tree equity, including our wonderful [urban forest volunteers](#) to be the face of the equity score campaign.**

It was a hot summer day in Nechells, and we had a nice time at the photoshoot. Catherine interviewed our keen volunteers about their relationship with nature and why they volunteered, the young men also proved to be incredibly photogenic, and Raghav showed Phil (professional photographer) some of his amateur photography skills!

We would like to thank Andy Allison, [BCC](#) Tree Officer, for providing the planting maps that Charlotte used to show WT around Nechells and its specific the planting locations. Not only this time, but for every planting session! We look forward to working with our partners this year to propel our projects even further.

**BTP will be launching their own tree equity website page very soon, including more information and images; keep your eyes peeled for the update in the next few months!**

**[Birmingham Roots](#) is BTP's monthly newsletter for the mailing list.**

It is available to download online, in our [Newsletter Archive](#).

[Website](#) | [Facebook](#) | [Instagram](#) | [LinkedIn](#) | [Twitter](#)

# Tree Tales

## Weeping Willow

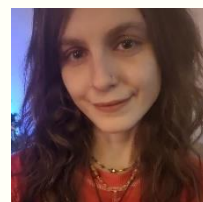
“When I was growing up, being an only child, I spent many magical hours tracing every corner of the garden. I’d collect unusual rocks, colourful insects, leaves, small fistfuls of soil, anything that caught my youthful eye, and use the large stone pot outside to make ‘a witch’s potion’ (hopefully not with the insects, but I know I ate seven ladybirds at one point, as I was clearly an overly curious child who learned with their mouth).

My dad is an arborist, so I’ve always had a close connection with green spaces. I grew up in a quaint bungalow adjacent to a large playing field, where halfway up, on the left-hand side, there was and still is a beautiful, nodding willow tree on the edge of the embankment. I’ve climbed and fallen out of that

tree enough times over the years to lose count, and I remember swinging my stubby legs over the broken bottom branch to get into the tree (awkwardly, hence the falling), singing from the top branch, sharing secrets with my friends over drinks.

This drooping, weeping willow tree has, and always will be, a special memory, and a part of my story, my growing up and experiencing the world (no trees were tasted during this time). It reminds me of my family, my old friends, and show me that when life changes, the willow still stands there with my memories inside.”

Charlotte (Charley) McDermott  
BTP Communications Officer



# We all have a Tree Tale...

# and we want to hear yours.

We are calling for submissions for Tree Tales, that will be archived on our [website](#), a compilation of individual or group stories about nature and green spaces for a collective anthology. We want to know how you have been touched by nature, why it’s important to you, your favourite memory with trees...



There is no word, format, or theme limit for submissions, simply let your imagination run wild, and cast your mind back to a time or a memory that means something to you. If you would like to record yourself speaking, video your favourite park with a voice over, write a little story like above... Show us your creativity and love for trees!

## Tell us your tale about nature!

[Click here for the website launch](#)

Birmingham Roots is BTP’s monthly newsletter for the mailing list. It is available to download online, in our [Newsletter Archive](#).  
[Website](#) | [Facebook](#) | [Instagram](#) | [LinkedIn](#) | [Twitter](#)



Email your submissions to: [info@birminghamtreepeople.org.uk](mailto:info@birminghamtreepeople.org.uk) or submit them through the [website](#).