

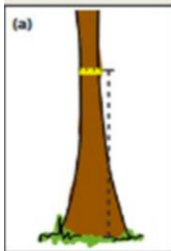
Variables Handout v2 2024

PPE – hi viz jacket	DBH reckoner
DBH tape or soft measuring tape	Secateurs – make sure they are sharp and clean
BTP business cards	Hand saw
Clipboard with paper spreadsheet	Penknife – some ties are tight; blade easier than secateurs
Pen/Pencil	Heavy duty bags to collect tree ties/cuttings
Residents' leaflets	

Any queries whilst surveying – use Tree Tribe WhatsApp

V4 DBH

(cm) at 1.5m above ground level



V5 Circumference

(cm) 15cm above ground for normal tree



7.5cm above root stock

V6 Total Height

(m) e.g. 2m, 4m

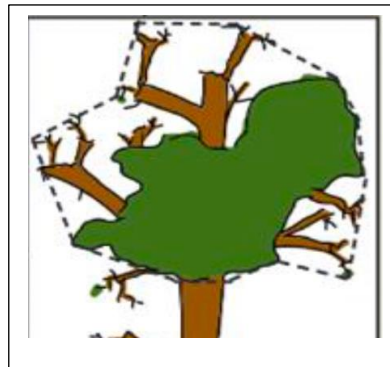
V7 = Height to Canopy

ground to the first main branch
(m) e.g. 1.5m

V8 Crown Dieback

0	0% (no dieback)
1	1-20%
2	21-40%
3	41-60%
4	61-80%
5	81-99%
6	100%

In early spring, look for fat terminal buds



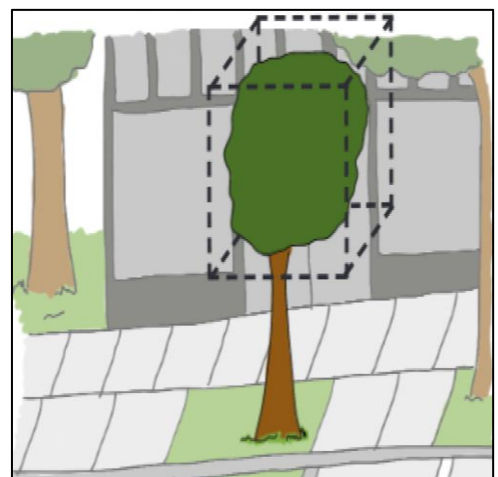
Approx 60% - 3

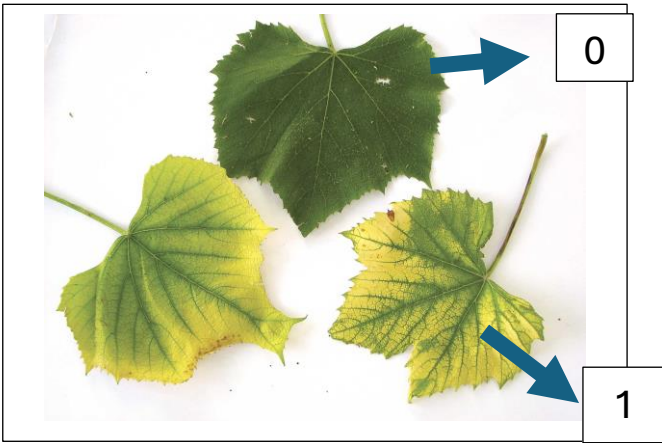


Approx 70% - 4

V9 Crown Exposure

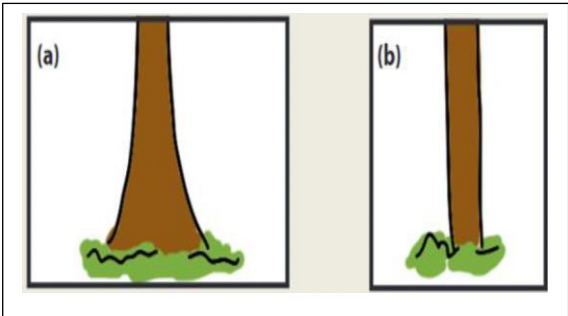
0	Tree receives no light on any sides, as it is shaded by other trees/vegetation, buildings or other infrastructure
1	Receives light from top or only 1 side
2	Receives light from 2 sides but not the top, or from the top & 2 sides
3	Receives light from 3 sides but not the top, or from the top and 2 sides
4	Receives light from top & 3 sides
5	Receives light from all 4 sides & the top (unrestricted)



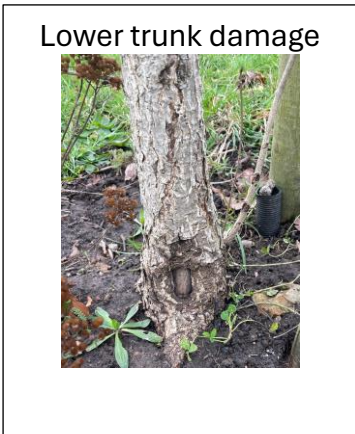


V10 Chlorosis
 0 = Not found or less than 25% of the entire tree
 1 = Present (at least 25% of the entire tree)
If the tree is dead, record the value as 0

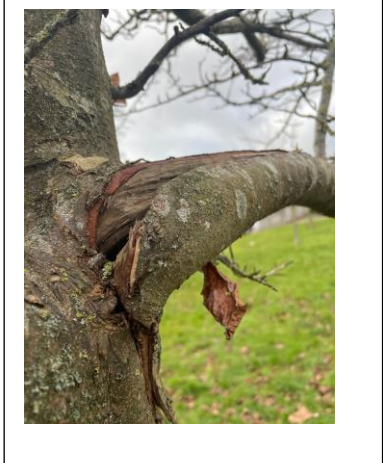
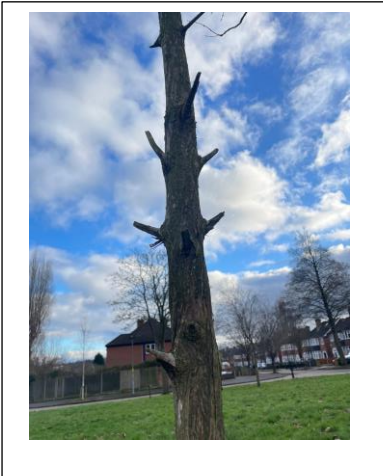
V11 Root Flare
 1 = Present (a) 0 = Absent (b)



V12 Lower Trunk Damage (below 45cm)
 0 = Absent (no evidence)
 1 = Presence of damage



V13 Other Damage (above 45cm)
 0 = Absent (no evidence) 1 = Damage present



V14 Overall Tree Condition

Good
 Fair
 Poor
 Dead **(still collect the data!)**
 Sprouts
 Stump
 Absent **(if not found or it has been replaced - add in tree comments: New Planting)**

Loose roots/wobbly tree

Do not remove ties or stakes if the tree is loose
Report to BCC with photo evidence
State the tree has loose roots and needs re-staking

Go to: Birmingham.gov.uk > Parks, leisure and wellbeing > Report park issues > Problems with trees



Good

Fair

Poor

V15 – 21 Interference with Infrastructure

V15 Utility	V16 Building	V17 Fences	V18 Signs	V19 Lighting	V20 Pedestrian Traffic	V21 Road Traffic
branches touching wires or poles	Branches touching a building	Branches touching a fence	Branches touching signs or blocking view	Branches touching lamp post	Branches in the way of pedestrians (pruning may be required)	Branches in conflict with passing traffic

*****Present conflict, not in the future*****

0 = Not present (no evidence)	1 = Interference present
-------------------------------	--------------------------

V22 Ground Cover at Base

Soil
 Organic Mulch (woodchip)
 Inorganic Mulch
 Grass
 Perennial
 Annual
 Weeds
 Pavement
 Other permeable
 Other impermeable
 Gravel

V23 Ground Cover Under Canopy

Soil
 Organic Mulch (woodchip)
 Inorganic Mulch
 Grass
 Perennial
 Annual
 Weeds
 Pavement
 Other permeable
 Other impermeable
 Gravel

V24 Planting Area Type

Median = Roundabout



Tree Lawn

Median = Central Reservation



Tree Pit

Shoulder



Tree Grate



Bumpout



Front Yard



Side Yard



Open Area



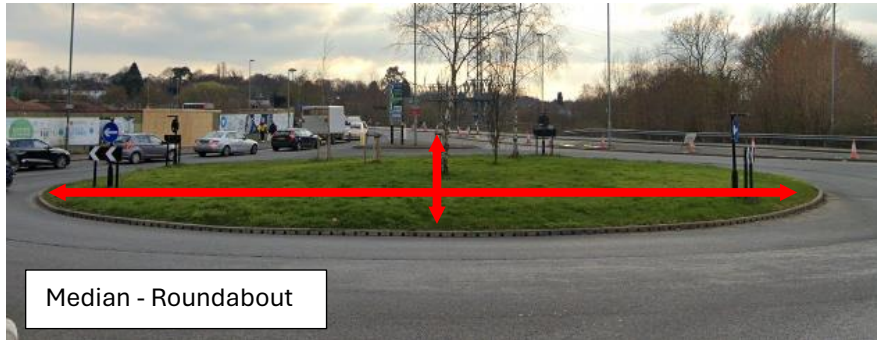
V25 Planting area relative to Road

Above	Even	Below
-------	------	-------

V26 Planting Area Width & V27 Planting Area Length

Planting Area Type (V24)	Where to measure the width
Tree Lawn	measure between pavement and the kerb
Shoulder	measure between road and private road/car park
Median – Roundabout and Central Reservation	measure between 2 lanes of traffic, from kerb to kerb
Tree grate/pit	measure width of tree grate/pit in narrowest section
Bumpout	measure width of bumpout in narrowest direction (usually parallel to road)
Front yard	measure between house/front porch for 2 structures between which tree located
Side yard	measure from wall to wall for 2 structures between which tree located
Open area	measure, in narrowest direction, the distance between walls/impervious surfaces bordering common areas





V28 Kerb Presence

0 = No kerb	1 = Present	Damaged/partial
-------------	-------------	-----------------

V29 Number of Trees within 10m

V30 Number of trees within 20m

V31 Number of trees in same planting area

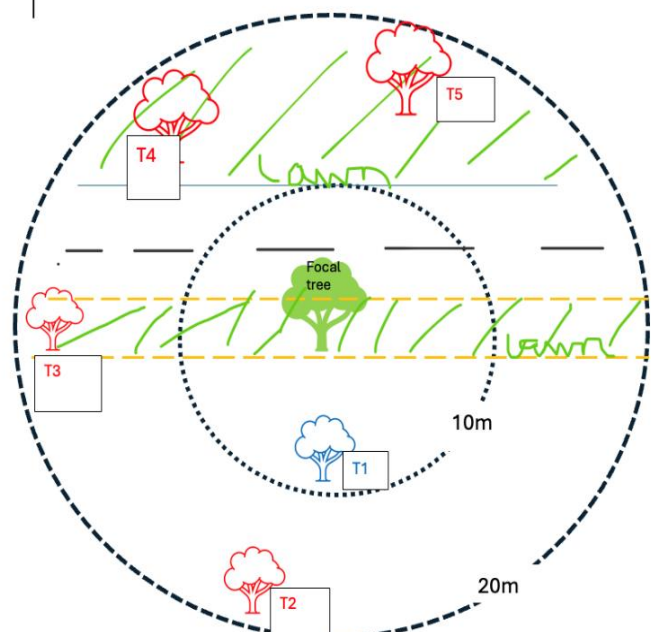
DO NOT INCLUDE THE FOCAL TREE

Trees counted as part of 10m radius included in count of 20m radius

$$V29 = T1 \text{ (1 tree)}$$

$$V30 = T1 + T2 + T3 + T4 + T5 \text{ (5 trees)}$$

$$V31 = T3 \text{ (1 other tree in same planting area as focal tree)}$$



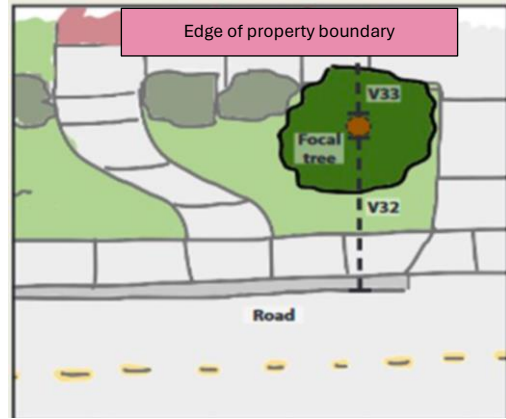
V32 Measuring Distance to Road

(m) e.g. 0.8m, 2.25m

V33 Distance to Property Boundary

(hedge, wall, lawn)

(m) e.g. 0.9m, 1.3m,



V34 Pruning

Correct

Incorrect

None (no evidence of pruning)

*****Evidence of pruning since planting*****

*****First Aid*****

Prune any broken/damaged branches, branches at eye level, branches on the roadside that can be damaged or have been damaged by vehicles – if in doubt, use Tree Tribe WhatsApp for advice

Correct



Incorrect



Correct



Incorrect



V35 Mulching

Correct

Incorrect

None



V36 Staking

Correct

Incorrect

None – no staking

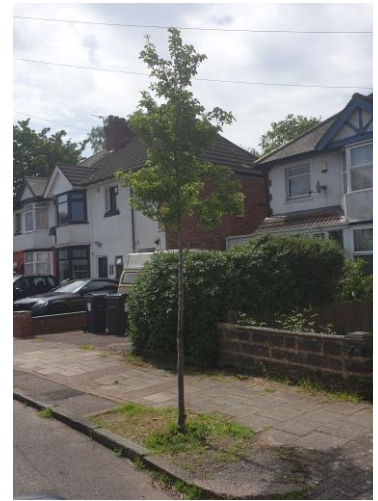
Correct – rotted stake, fallen, hanging off



Incorrect – ties are tight, digging into the bark



None



Correct



Incorrect – ties were tight and damage to trunk



V37-42 Evidence of Care

V37
Water bag

V38
Water pipe

V39
Bench

V40
Bird Feeder

V41
Art

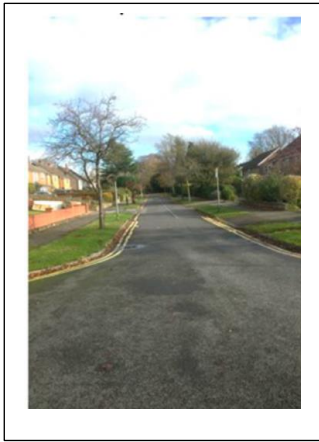
V42
Debris

0 = Not present

1 = Present

V43 Road Congestion

0 - Parking not permitted



1 - Free parking (driveways & minimal signs of cars parked regularly on road)



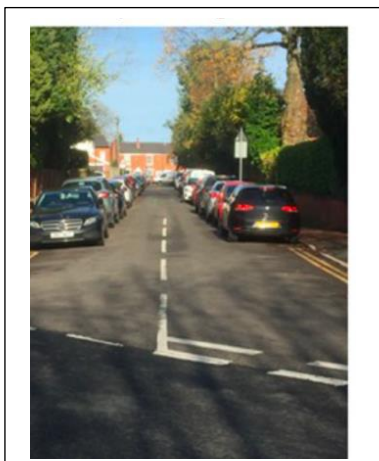
2 - Easy parking (road wide enough to accommodate cars parked on them & allow straightforward traffic flow)



3 - Limited parking available (some cars parked on road & driveways; traffic flow restricted in places)



4 - Clear shortage of parking (cars have 2 or more wheels up on pavement, traffic flow difficult)



5 - Major shortage of parking (cars parked on most of pavements, often too close to street trees)

