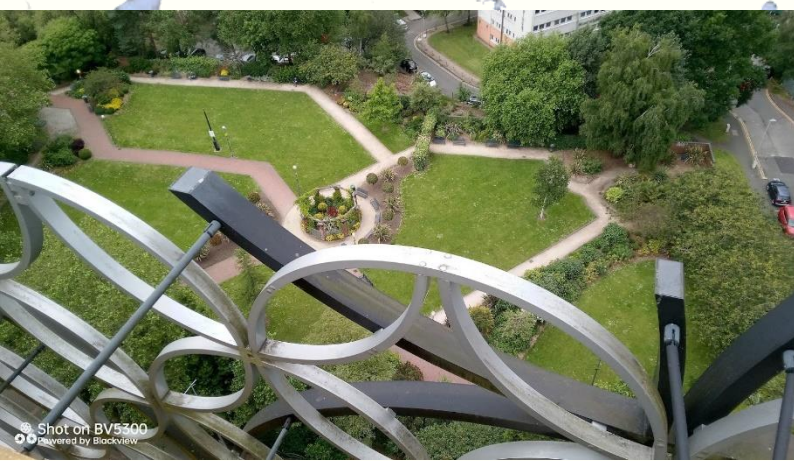


The Droplet

A Volunteer's Update



Valerie Edkins has been an urban forest for quite some time, helping us with events, street tree surveys, and tree planting. She is also involved with the Friends of Perry Park, meaning they have had a rather busy end of Spring, moving into Summer!



geology of this site is amazing containing Sandstone, Clay and Coal. Load Dartmouth mined out the coal. After the railways were introduced, he had a separate rail line built on the embankment to carry the coal to the main railway line. Prior to this the coal was pulled by hand to the nearby canal. After all the useable materials were mined out, the area became a National Nature Reserve in 2020 as a part of the Black Country Geo Site.

June 2024 has been a very busy month. We took part in The Big Help Out, in Perry Park and along the Tame Valley Canal with FOPPs and CRT at the beginning of the month. We collected in total nine bags of general litter.

The area had been earmarked to become a land fill site, but public pressure prevented this due to the unusual varieties of rare plants that had grown on the site since mining had ceased. All the trees are young having grown since the quarry was closed in the 1940s. For more info visit blackcountrygeopark.dudley.gov.uk.

June 12th attended a Birmingham Tree People Meeting in the Exchange with information on how to get help with funding. Then we visited the Central Libraries roof garden.



June 14th Online meeting with the Future Parks online chat discussing No Mow May and what happens next.

15th June. A visit to Salt Wells Nature Reserve in Dudley. This was fascinating the area was once a quarry owned by Royal Doulton and known as Doultons Claypit. The

