

It's a bit hotter now,
let's water our trees!



The Droplet

Tree Biology: What is wood?

Most of our urban forest volunteers will know by now that we run free, monthly [training](#) sessions. Our most recent online seminar, run by [Trustee](#) Trainer and Arboriculturalist Ian McDermott, was the first of the three-part classes on Tree Biology, and this one covered the topic of wood. We have shared a few slides below to give you an idea, but if you'd like to know more, we hope to upload the class to YouTube.

Life processes – some examples:

photosynthesis
a tree needs to eat!

support

mycorrhizal interactions

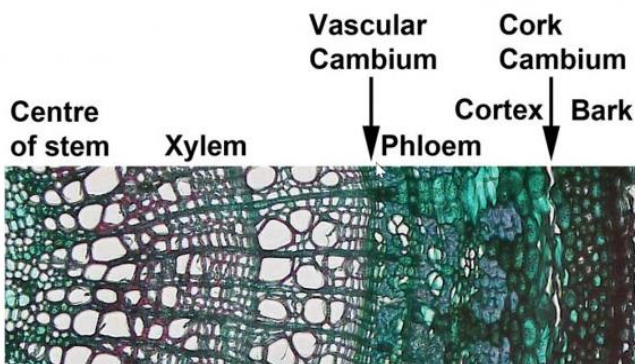


What makes a plant a tree?

Like other plants:

- Trees are *autotrophs* - meaning they produce their own food.
- Tree cells have rigid cell walls, a large central vacuole, and chloroplasts.

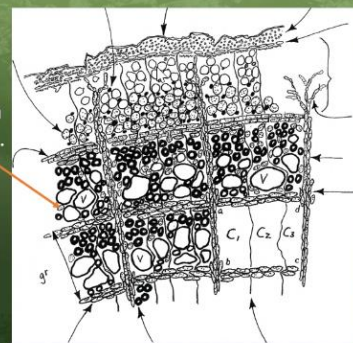
The difference is
Secondary Growth!



Our secondary growth model:

A typical hardwood tree in cross section (transverse surface).

What can you identify?



The next in class for Tree Biology will be at [Sons of Rest, Handsworth Park](#). We will be covering why trees stand up. There will also be a chance to go outside to look at the trees, with some tree identification. There is an amazing [Benjamin Zephaniah](#) mural on the side of the Sons of Rest building, which would be a great backdrop for recording [poetry videos](#) that day. Refreshments will be served; tea, coffee, water, and light snacks, but contributions to the snack table are very welcome! Don't forget to register as an [urban forest volunteer](#) to access the classroom.



**TREE
TALES**

The Droplet is a fortnightly tree-formative flyer for our [mailing list](#).
The monthly newsletter, [Birmingham Roots](#), is also available.
[Website](#) | [Facebook](#) | [Instagram](#) | [LinkedIn](#) | [Twitter](#)

